

## Overview

JetNet 2205(f) is a compact size 5(4)-port 10/100T(X) and 0(1) port 100Base F(X) Industrial Ethernet Unmanaged Switch, which ensures high switching performance and easy installation. Along with its high switching performance, it supports multiple internal performance features, such as QoS, Flow Control, it ensures quality traffic transmission.

The JetNet 2205(f) adopts rugged metal case design to operate in harsh environment (-40~75°C).

It is recommended to be powered by DC 24V with 12-40V ranged.

## Package List

- ▶ JetNet 2205(f) Ethernet switch
- ▶ Quick Installation Guide



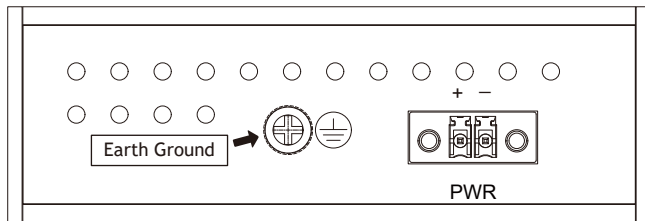
## Installation

### Mount the unit

Din-Rail mount: Mount the Din-rail clip on the rear of JetNet 2205(f) on the DIN rail.

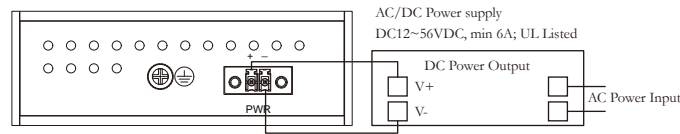
### Grounding JetNet 2205(f)

There is one grounding screw on the bottom side of JetNet 2205(f). Connect the earth ground screw of JetNet 2205(f) to the grounding surface to ensure safety and prevent noise.



## Wiring the Power Inputs

1. Insert the positive and negative wires into the V+ and V- contact on the terminal block connector.
2. Tighten the wire-clamp screws to prevent the power wires loosened.



### Note:

The recommended working voltage is DC 24V. (Input range: DC12~ 40 V)

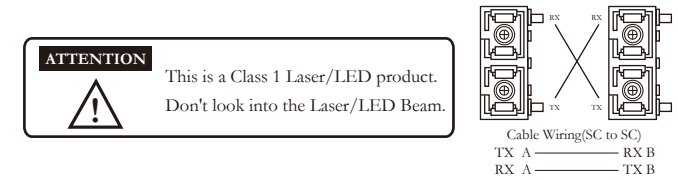
## Connecting to Network

Connecting the Ethernet Port: Connect one end of an Ethernet cable into the UTP port of JetNet 2205(f), while the other end is connected to the attached networking device. UTP port support auto MDI/MIDIX function.

The LNK / ACT LED will turn Yellow for 10M Ethernet or Green for 100M Ethernet.

LED	Color	Function
PWR	Green	Power on
1-5(4)	Green	Link for 100M
	Flashes Green	Activity for 100M
	Amber	Link for 10M
	Flashes Amber	Activity for 10M
SFP	Green	Link
(JetNet2205f)	Flashes Green	Activity

Connection the Fiber Port (JetNet 2205f): Connect the fiber port on your JetNet 2205f to another Fiber Ethernet device, by following the figure below. Wrong connection will cause the fiber port not working properly.



## Support

### 5 Years Warranty

Each of Korenix's product line is designed, produced, and tested with high industrial standard. Korenix warrants that the Product(s) shall be free from defects in materials and workmanship for a period of five (5) years from the date of delivery provided that the Product was properly installed and used.

This warranty is voided if defects, malfunctions or failures of the warranted Product are caused by damage resulting from force measure (such as floods, fire, etc.), other external forces such as power disturbances, over spec power input, or incorrect cabling; or the warranted product is misused, abused, or operated, altered and repaired in an unauthorized or improper way.

**Attention! To avoid system damage caused by sparks, please DO NOT plug in power connector when power is on.**

The product is in compliance with Directive 2002/95/EC and 2011/65/EU of the European Parliament and of the Council of 27 January 2003 on the restriction of the use of certain hazardous substances in electrical and electronics equipment (RoHS Directives & RoHS 2.0)

### Korenix Customer Service

KoreCARE is Korenix Technology's global service center, where our professional staff are ready to solve your problems at any time Korenix global service center's e-mail is [KoreCARE@korenix.com](mailto:KoreCARE@korenix.com).

For more information and documents download please visit our website:

<http://www.korenix.com/downloads.htm>

JetNet 2205(f) 是具有5(4)个千兆以太网网络电口及1个千兆F(X)界面, 工业以太网交换机。

JetNet 2205(f) 交换机采用坚固的铝合金外壳结构设计, 能够在恶劣的工业环境 (-40~75°C) 稳定工作, 符合IP30工业防护标准。

JetNet 2205(f) 在机身底部装有可拆卸电源线槽, 其输入电源范围是12~40VDC, 建议采用稳定的24V直流电为设备供电。



**打开包装 · 检查下列配件**

- ▶ JetNet 2205(f)工业媒体转换器\*1
- ▶ 快速安装指南\*1

**常规**

警告: 此符号表示您必须遵守的警告

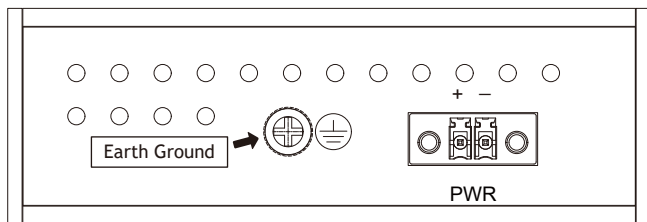
注意: 此符号表示您必须注意的重要注意事项。

**Din-Rail支架 :**

将JetNet 2205(f) 背面的Din-rail夹子安装在DIN导轨。

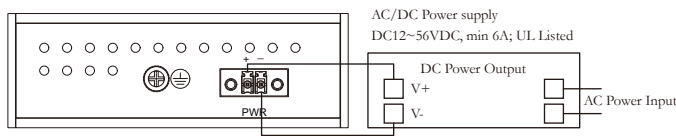
**JetNet 2205(f) 接地:**

JetNet 2205(f) 底部有一个接地螺丝。将JetNet2205(f) 连接框架接地以保证安全, 防止噪音造成通信干扰。



**输入电源接线:**

- 1.将正极和负极线插入端子块连接器上的V+和V-触点。(如右上图)
- 2.拧紧电线夹螺钉, 防止电源线松动。



**注意:**

推荐的输入电压为DC 24V。(可输入范围: DC12~40V)

**连接到网络**

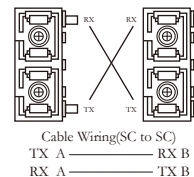
连接以太网端口: 将以太网电缆的一端连接到JetNet 2205(f) 的UTP端口, 另一端连接到所连接的网络设备。UTP端口支持自动MDI/ MDIX功能。LNK / ACT LED将亮起并闪烁, 表示RJ-45端口链路和从RJ-45接收和发送的数据包。

LED	Color	Function
PWR	绿色	电源输入
1-5(4)	绿色	RJ-45 端口链路 100M
	闪绿	RJ-45 接收和发送 100M 数据包
	棕色	RJ-45 端口链路 10M
	闪棕	RJ-45 接收和发送 10M 数据包
光口	绿色	光口链路
	闪绿	光口接收和发送的数据包

**光口连接 (JetNet 2205(f))**

光口连接: 光纤线一端连接JetNet光口, 另一端连设备, 如下图所示连接模式。错误的连接会使光口不能正常工作。

**ATTENTION**  
 This is a Class 1 Laser/LED product.  
 Don't look into the Laser/LED Beam.



**5年质保**

所有科洛理思产品的设计、制造及测试都是采用较高的工业标准。科洛理思保证自产品出货日起提供最高5年之免费保修服务, 保修期间如因零件损坏或制程不良而导致产品故障, 我们提供免费维修服务。自然外力 (火、水、雷灾) 所造成的产品故障, 或其它外部因素如电源干扰、不当电源输入、不当接线等造成的损坏, 不列入产品保固范围; 此外, 产品被误用、未经授权的修理及修改等行为将造成保固条款失效。

**注意!** 请勿于电源开启时插拔接线端子, 避免产生火花造成系统损坏。

此产品保证完全符合欧盟2003年1月27日电气和电子设备有害物质限制委员会限用指令2002/95/EC (RoHS)及2011/65/EU(RoHS 2.0)。

**Korenix售后服务**

KoreCARE是科洛理思科技全球服务中心, 我们专业的技术人员随时准备解答您的疑问。

科洛理思全球服务中心 EMAIL: KoreCARE@korenix.com

业务服务: sales@korenix.com.cn

官网: www.korenix.com.cn

**Korenix Technology Co., Ltd.**  
 (A Beijer Electronics Group Company)

Tel: +886-2-89111000

Fax: +886-2-29123328

Business service:sales@korenix.com

Customer service: koreCARE@korenix.com

www.korenix.com

CPQ00N2205000

Patent No. (Taiwan):  
 Granted Invention: I 313547  
 Granted Invention: I 321415  
 Granted Invention: I 344766  
 Granted Invention: I 346480  
 Granted Invention: I 356616  
 Granted Invention: I 364684  
 Granted Invention: I 376118  
 Granted Invention: I 393317  
 Granted Invention: I 398066  
 Granted Invention: I 398125  
 Utility Model: M 339841  
 Utility Model: M 339840